

[View this email in your browser](#)

CTI Newsletter

Conducting a Registry Program

The Real World Evidence (RWE) landscape has an overwhelming collection of analyses and Real World Data (RWD). When evaluating your program, it can be challenging to navigate through the many options. Would the program benefit from an [economic evaluation](#), comparative statistical analysis, meta-analysis, [systematic literature review](#), or another analysis model? Which RWD are important to analyze: existing literature, claims or hospital data, government survey, repurposed trial data, registry data, etc. CTI's team of RWE experts can help you assess these questions and design the right analysis for you.

If you choose to conduct a registry, below are some tips on how to do so effectively and efficiently.

Choosing to Utilize a Registry

A local or multi-national registry is an exciting opportunity to integrate multi-source data and provide results, using data collected from a variety of stakeholder sources. These include patients, caregivers, and professional healthcare providers, which result in complex, inter-related, and multi-level data (e.g. clinical, economic, and humanistic). A registry might be the right choice for your program if other data sources lack important information or longitudinal follow-up required to answer your research questions.

Implementing a Registry

Once you have chosen to conduct a registry program, it is important to pay attention to components of registry implementation that can impact your end result. Examples of components to consider include the following:

- Planned hypotheses and purposes of the registry
- Patient population planning/scope and site selection
- Data (quality/completeness of collection, variables/covariates, validation, permissions/controls regarding external use)

registry efforts into start-up and preparation activities, patient engagement and site motivation, RWD technology services, and data analysis and reporting.

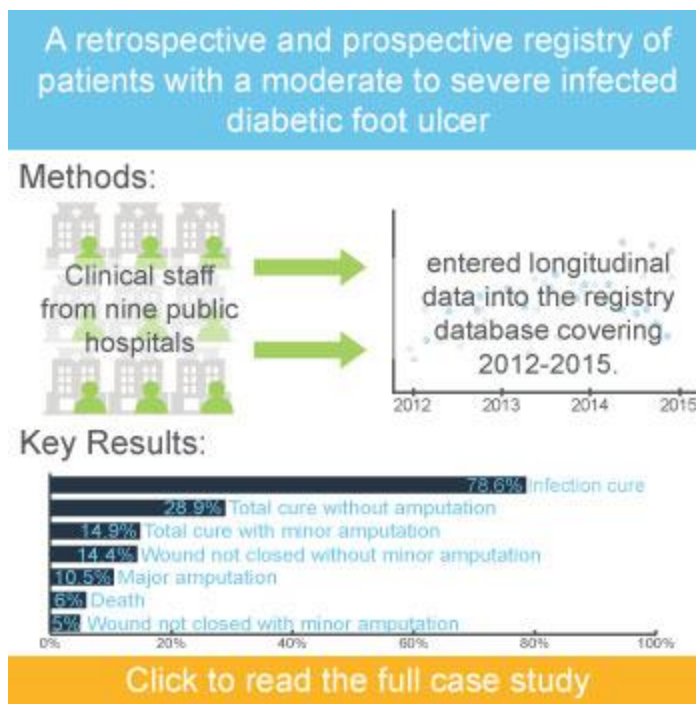
- Analysis (frequency/content of dashboard updates, governance of external result distribution)
- Publication (periodic newsletters, conference/journal submissions annually and as appropriate)
- Key opinion leaders (KOLs), subject matter experts (SMEs), advocacy groups who may play important roles in your registry's governance and implementation.

How CTI Can Help

The RWE team at CTI has experience in customizing registries within the US, Europe, Latin America, Asia-Pacific, and MENA regions. CTI's clinical trial experience provides intimate knowledge of target populations and excellent working relationships with medical centers the world over. CTI's multidisciplinary global research organization is adept at conducting evolving, multifaceted research programs. The global RWE and clinical teams at CTI collaborate on integrating economic, patient reported outcomes (PRO), and clinical data. This synergistic experience includes the following essential capabilities:

- Expertise in complex clinical research programs
- Technical capabilities and an electronic data warehouse infrastructure designed to collect and share data across multiple formats and platforms
- Therapeutic and clinical trial experience
- Registry, natural history, and RWE methodologies experience
- Global strategies leveraging local intelligence.

To find out more about how we can help you with your program, [visit our website](#) or fill out our contact form to [start a conversation](#) with one of our team members.



The CTI Way

Every month, we choose a theme highlighting characteristics of our company culture, something we describe as "The CTI Way." This month's theme is "learn."

CTI encourages the constant pursuit of knowledge through programs like formal internal training series, partnerships with local universities, and a tuition assistance benefit.

We believe that successful people are lifelong learners and successful organizations are

[Subscribe](#)[Past Issues](#)[Translate ▼](#)

LEARN



The Year of the Employee

Every month, we'll be spotlighting one of our employees and their contributions to CTI. We are successful as a company because of our passionate and talented employees, who work tirelessly to bring life-changing drugs to patients around the world.



Amanda Coleman, MS
Assistant Research Scientist

Amanda has been with CTI for over five years and is a graduate of the [Xavier University HECOR Masters program, which CTI helped develop](#). Amanda completed the program, while working at CTI in the Real World Evidence department.

She works on a variety of different projects, including scientific literature searches, burden of illness analyses, budget impact studies, and analyzing large scale databases for clients. Her role enables her to collaborate with clients and internal team members across many departments, including medical writing and biometrics. She's even developed and presented abstracts, posters, and manuscripts throughout her time with CTI. Amanda loves working at CTI and helping clients reach their goals.

Want to join Amanda and our CTI team? [Click to hear more from our team members](#) or [click to see our current job opportunities](#), including [new expansion across the United States!](#)

Additional Highlights

Upcoming Meetings We'll be Attending

ISPOR
New Orleans, LA
May 18-22

**American Thoracic Society
Conference**
Dallas, TX

American Transplant Congress
Boston, MA
June 1-5

BIO 2019
Philadelphia, PA

[Subscribe](#)[Past Issues](#)[Translate ▼](#)**Outsourcing in Clinical Trials (OCT)****East Coast**

King of Prussia, PA

May 21-22

Alliance for Regenerative Medicine Cell & Gene Washington Forum & Fly-In

Washington, DC

May 21-22

SLEEP Annual Meeting

San Antonio, TX

June 8-12

DIA Annual Meeting

San Diego, CA

June 22-28

Huntington's Disease Society of America

Boston, MA

June 27-29

**CTI Cares**

This month we are supporting The Emily Whitehead

Foundation, who's mission is to raise awareness and funding for innovative childhood cancer treatments, such as immunotherapy, that will improve survival rates and quality of life.

[Learn more and donate](#)

**New Hires & Promotions**

CTI is thrilled to welcome all of our new employees, and to congratulate our recently promoted employees!

[View New Hires and Promotions](#)

**Join Our Team!**

[We're growing across the United States!](#)

We're looking to build our team in the following new cities:

- Atlanta, GA
- Boston, MA
- Chicago, IL
- Dallas, TX
- Houston, TX
- Indianapolis, IN
- San Diego, CA
- Washington DC

[Search Open Positions](#)

[Subscribe](#)

[Past Issues](#)

[Translate](#) ▼

[THERAPEUTIC FOCUS](#)

[REGULATORY DEVELOPMENT & STRATEGY](#)

[CLINICAL SERVICES](#)

[RESEARCH CENTER](#)

[LIFECYCLE SUPPORT](#)

[REAL WORLD EVIDENCE/LATE PHASE](#)



Our mailing address is:
CTI Clinical Trial & Consulting
100 E RiverCenter Blvd.
Suite 1600
Covington, KY 41011

Want to change how you receive these emails?
[update your preferences](#)
[unsubscribe from this list](#)

[Add us to your address book](#)